



**PESTANA**

**SINTRA GOLF**

CONFERENCE & SPA RESORT

PORTUGAL





## PESTANA SINTRA GOLF - ONDE O GREEN VAI PARA ALÉM DO GOLFE.

No sopé da Serra de Sintra, na luxuosa área habitacional da Quinta da Beloura, encontramos o Pestana Sintra Golf. Com uma envolvente de plantas exóticas, este hotel de 4 estrelas e antigo solar rústico proporciona uma atmosfera sem igual.

Para os amantes do golfe, o grande atractivo é o fabuloso campo de golfe desenhado por Rocky Roquemore. Juntamente com este campo com um total de 18 buracos, existem também, uma loja e as clínicas de golfe para aulas de grupo ou individuais e, ainda, vários courts de ténis, um campo de futebol e um centro equestre.

Se pretende essencialmente relaxar, experimente o maravilhoso Spa, onde poderá descontrair totalmente com tratamentos na piscina interior, massagens, sauna, jacuzzi e banho turco. A somar a uma belíssima piscina exterior e a um ginásio, este luxuoso hotel tem um Centro de Conferências com salas totalmente equipadas para eventos empresariais.





## PESTANA SINTRA GOLF - WHERE THE GREEN GOES BEYOND THE GOLF.

*At the foot of the “Serra de Sintra” mountains, in the luxurious setting of the Quinta da Beloura, lie the premises of the Pestana Sintra Golf venue. Surrounded by exotic plants, this 4-star hotel, built on a rustic plot, offers a unique atmosphere.*

*For golf lovers, the main attraction is the fabulous golf course designed by Rocky Roquemore. In addition to this 18-hole golf course, the hotel also features a venue and a clinic for individual or group golf lessons, as well as several tennis courts, a football (soccer) pitch and an equestrian centre.*

*If you mainly want to switch off, then you can experience the wonderful Spa, where you will find total relaxation with treatments in the indoor pool, massages, sauna, Jacuzzi tub and Turkish bath. Along with a very beautiful open-air pool and a gym, this luxurious hotel has a Convention Centre with fully equipped meeting rooms for corporate events.*





# INSTALAÇÕES

## FACILITIES

**Elevador**

*Lift*

**Ar Condicionado**

*Air Conditioning*

**Recepção 24 Horas**

*24H Reception*

**Campo de Golfe**

*Golf Course*

**Campos de Ténis**

*Tennis Courts*

**Restaurante**

*Restaurant*

**Bar**

**Jardins**

*Gardens*

**Piscina Exterior**

*Outdoor Swimming Pool*

**Piscina Interior**

*Indoor Swimming Pool*

**Health Club e Ginásio**

*Health Club and Gym*

**SPA**

**Sauna, Jacuzzi e Banho Turco**

*Sauna, Jacuzzi and Turkish Bath*

**Massagem**

*Massage*

**Sala de Reuniões**

*Meeting Room*

**Lavandaria**

*Laundry Service*

**81 Quartos**

*81 Rooms*

**56 Suites**

**Cartões de Crédito**

*Credit Cards*

Quinta da Beloura, Rua Mato da Mina, 19  
2710-692 Sintra  
Tel.: +351 210 424 300 Fax: +351 210 424 398  
e-mail: [guest@pestana.com](mailto:guest@pestana.com)  
[www.pestana.com](http://www.pestana.com)

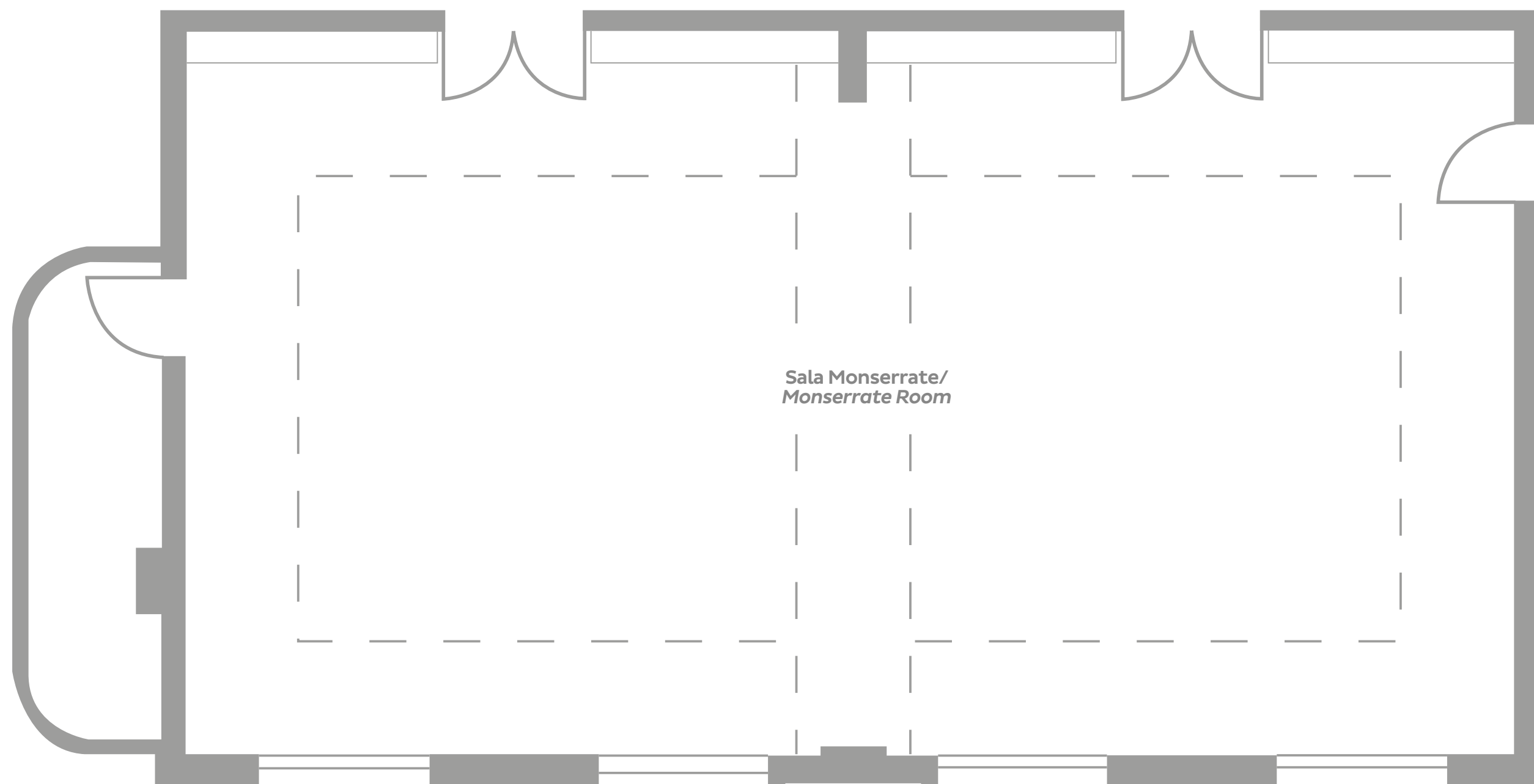
**GPS**  
**N: 38.76276327**  
**W: -9.3672877**

**SALAS DE BANQUETES  
E REUNIÕES**

*FUNCTION ROOMS*

**SALA MONSERRATE /  
MONSERRATE ROOM**

**PISO 0 / GROUND FLOOR**

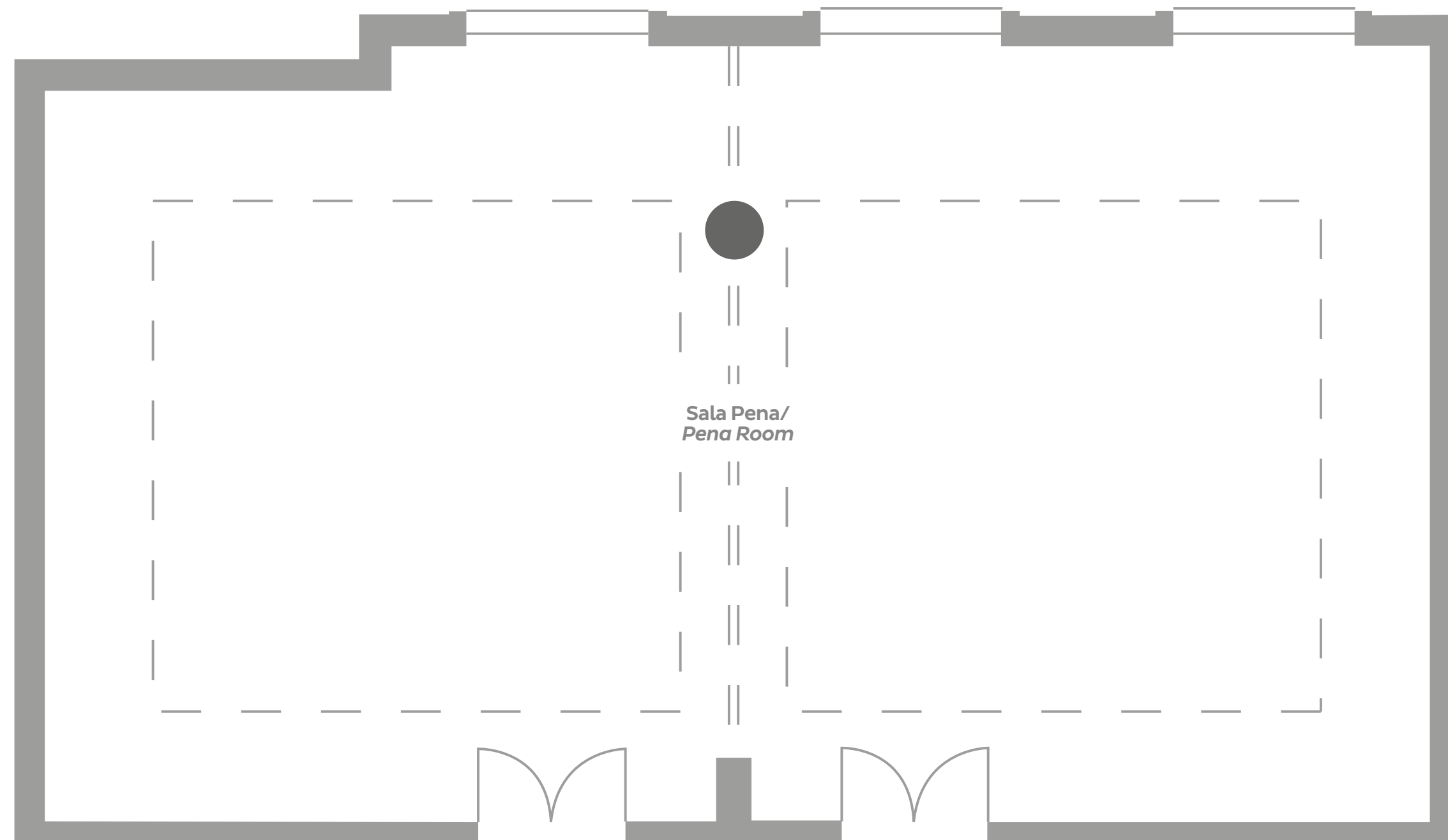


# SALAS DE BANQUETES E REUNIÕES

FUNCTION ROOMS

SALA PENA / PENA ROOM

PISO 0 / GROUND FLOOR

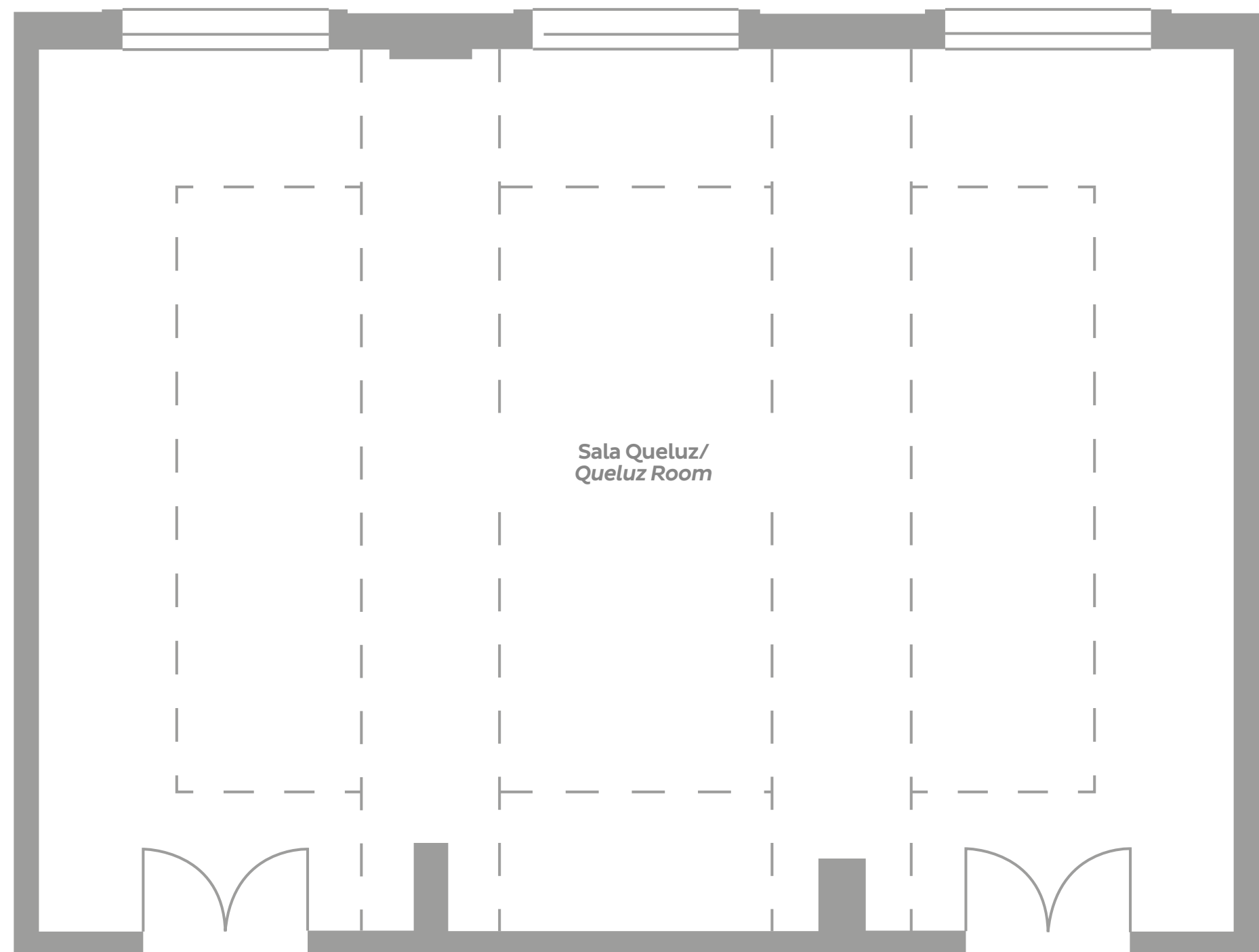


# SALAS DE BANQUETES E REUNIÕES

FUNCTION ROOMS

## SALA QUELUZ / QUELUZ ROOM

PISO 0 / GROUND FLOOR

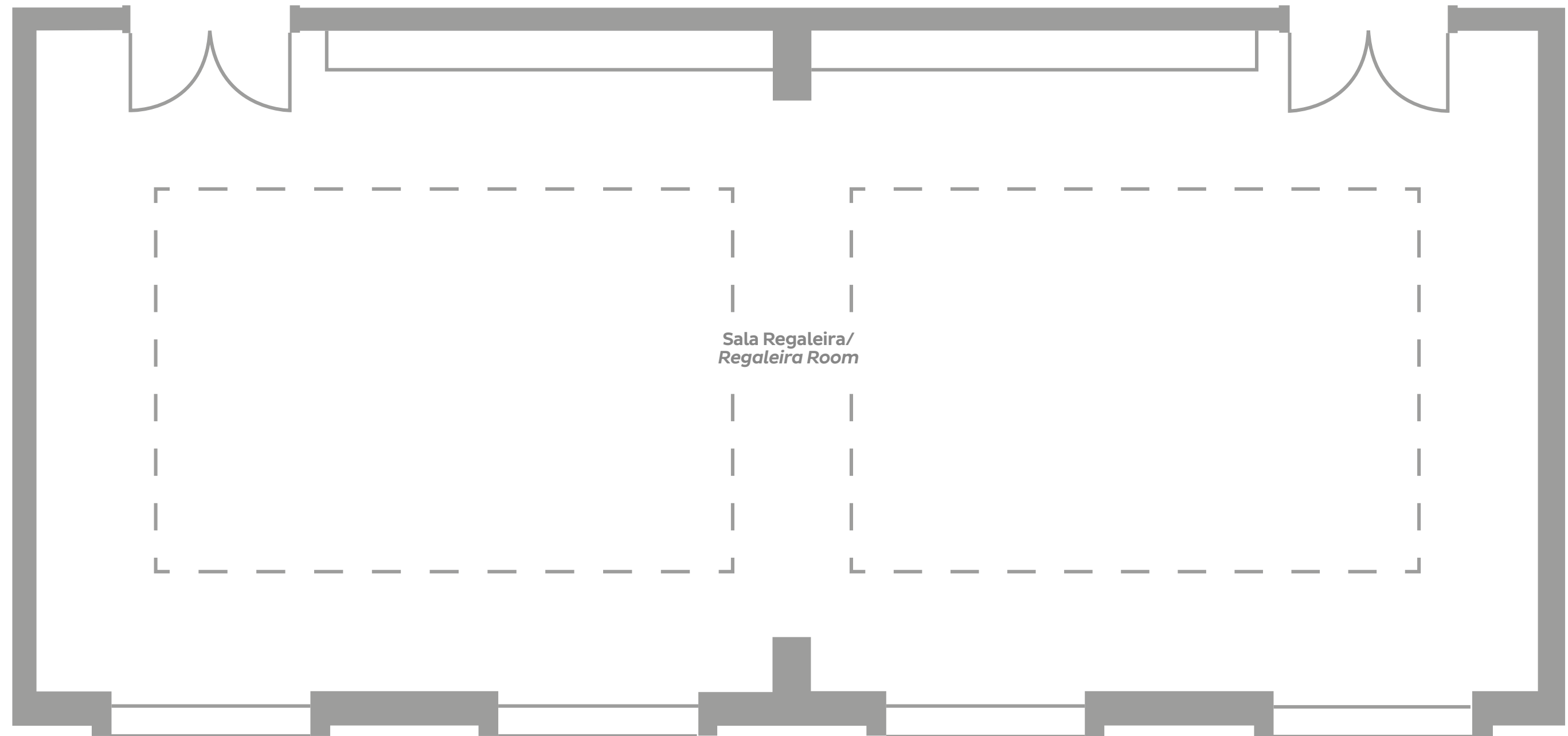


# SALAS DE BANQUETES E REUNIÕES

FUNCTION ROOMS

**SALA REGALEIRA /  
REGALEIRA ROOM**

PISO 0 / GROUND FLOOR



Sala Regaleira/  
Regaleira Room

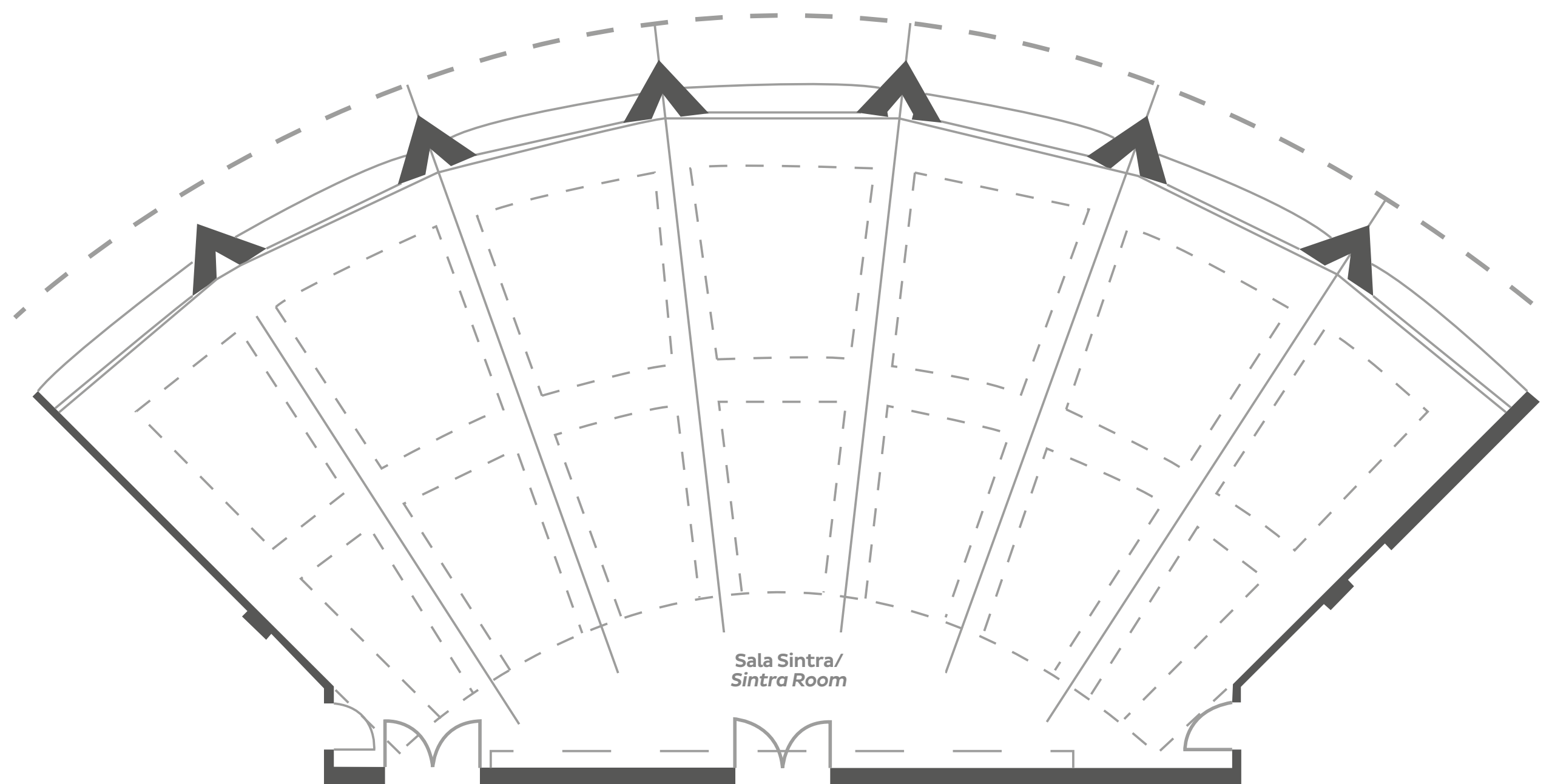


# SALAS DE BANQUETES E REUNIÕES

FUNCTION ROOMS

SALA SINTRA / SINTRA ROOM

PISO 0 / GROUND FLOOR





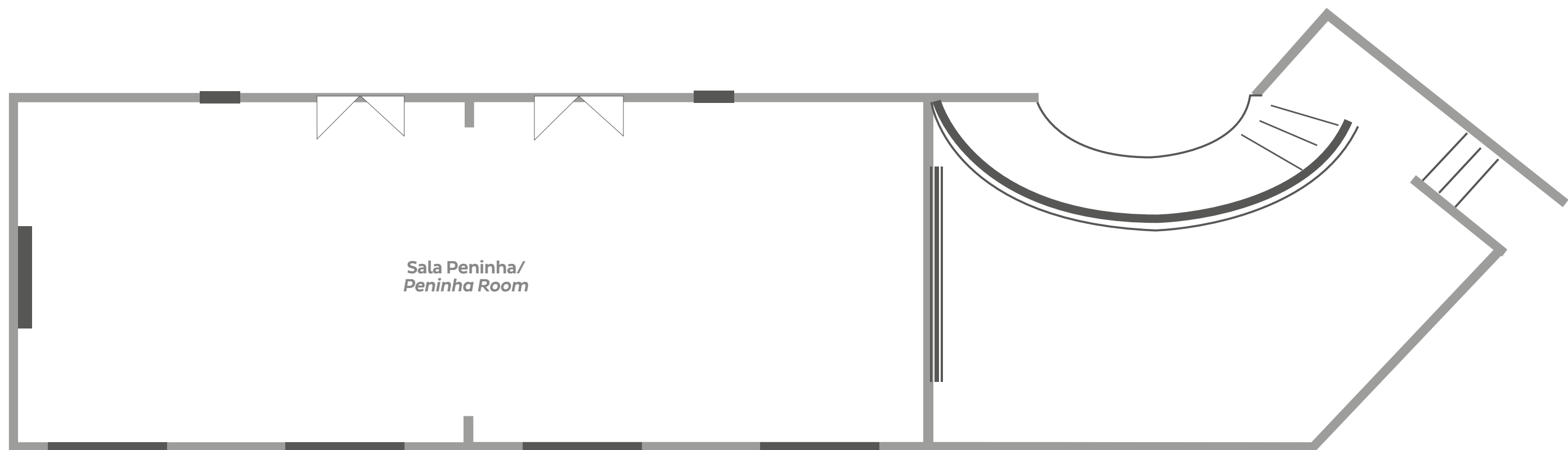
# SALAS DE BANQUETES E REUNIÕES

FUNCTION ROOMS

SALA PENINHA / PENINHA ROOM



PISO 1 / 1<sup>ST</sup> FLOOR



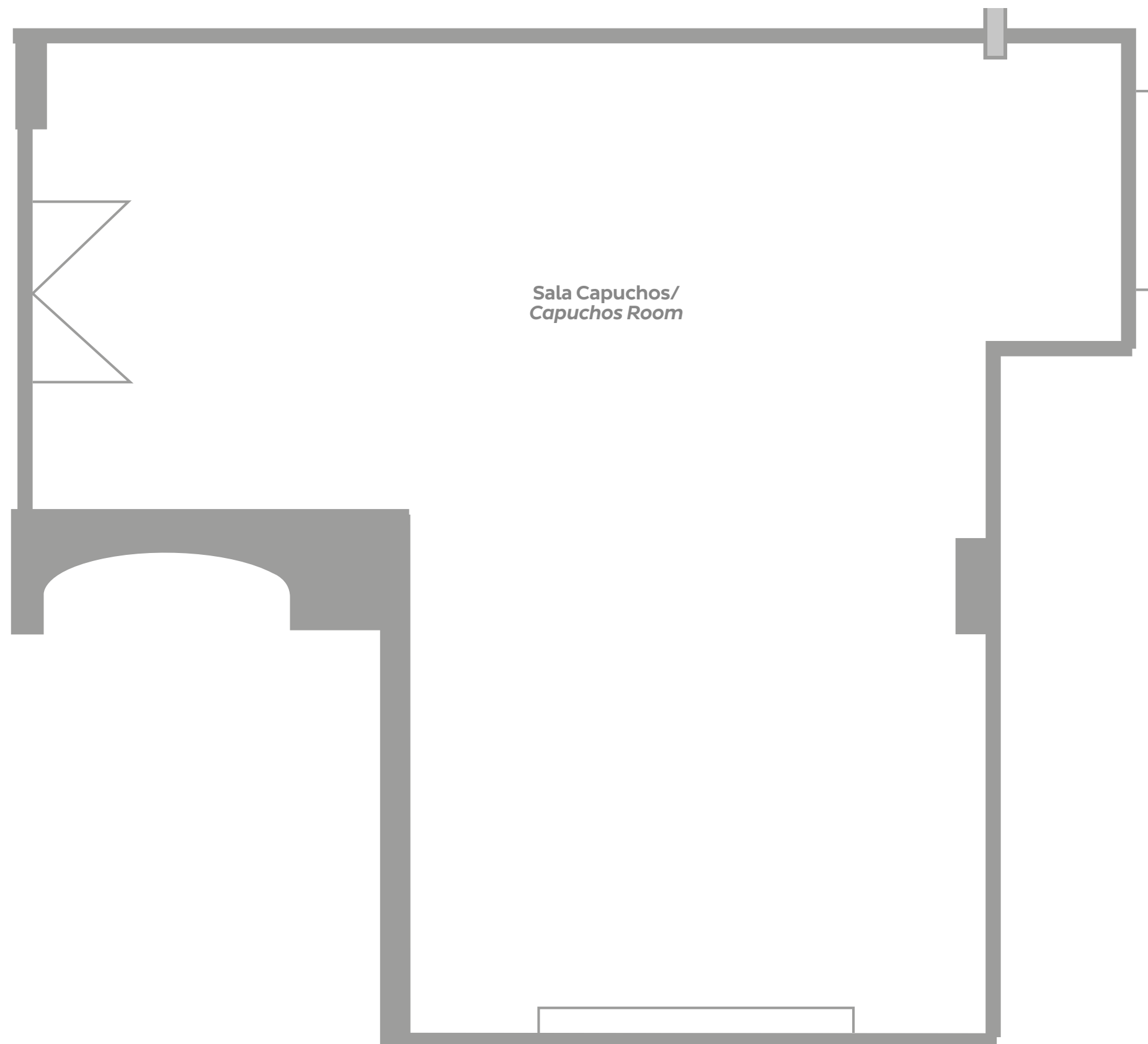


**SALAS DE BANQUETES  
E REUNIÕES**

*FUNCTION ROOMS*

**SALA CAPUCHOS /  
CAPUCHOS ROOM**

**PISO 1 / 1<sup>ST</sup> FLOOR**





# DIMENSÕES E CAPACIDADES

## DIMENSIONS AND CAPACITY



SALAS ROOMS	PISO FLOOR	COMPRIMENTO LENGTH	LARGURA WIDTH	ALTURA HEIGHT min.	ALTURA HEIGHT max.	ÁREA AREA (m <sup>2</sup> )	PLATEIA THEATRE	ESCOLA SCHOOLROOM	MESA EM "U" TABLE IN "U"	OPEN SQUARE	BOARDROOM	COCKTAIL RECEPTION	BANQUETES BANQUETING	MESAS REDONDAS BUFFET	A/C	LUZ NATURAL NATURAL LIGHT
QUELUZ	0	11,6 m	8,6 m	2,8 m	3,4 m	99,6 m <sup>2</sup>	60	36	33	42	n/a	80	55	55	✓	✓
MONSERRATE	0	15,7 m	8,2 m	2,8 m	3,4 m	130,5 m <sup>2</sup>	100	54	45	54	n/a	110	80	60	✓	✓
SINTRA	0	12,4 m	27,4 m	4,4 m	4,7 m	248,0 m <sup>2</sup>	220	125	54	66	n/a	220	150	140	✓	✓
			17,0 m													
PENA	0	15,3 m	8,6 m	3,1 m	3,4 m	128,3 m <sup>2</sup>	96	54	42	54	n/a	100	n/a	60	✓	✓
PENA A	0	7,6 m	8,6 m	3,1 m	3,4 m	63,0 m <sup>2</sup>	48	24	27	36	n/a	40	n/a	30	✓	✓
PENA B	0	7,6 m	8,6 m	3,1 m	3,4 m	63,0 m <sup>2</sup>	48	24	27	36	n/a	40	n/a	30	✓	✓
REGALEIRA	0	15,1 m	6,3 m	3,1 m	3,4 m	98,0 m <sup>2</sup>	88	51	42	48	n/a	80	n/a	60	✓	✓
PENINHA	1	15,3 m	6,5 m	2,4 m	2,7 m	99,5 m <sup>2</sup>	70	36	42	48	n/a	80	n/a	50	✓	✓
CAPUCHOS	0	7,9 m	3,8 m	2,8 m	3,1 m	44,5 m <sup>2</sup>	n/a	n/a	n/a	n/a	14	n/a	n/a	n/a	✓	✓
EXTRA - L		4,2 m	4,0 m													
TERRAÇO/ TERRACE	1					40 m <sup>2</sup>										
RESTAURANTE/ RESTAURANT	0												80	80	✓	✓









SALA SINTRA / SINTRA ROOM







**SALA PENA / PENA ROOM**



**RESTAURANTE / RESTAURANT**







**PESTANA**  
**SINTRA GOLF**  
CONFERENCE & SPA RESORT  
PORTUGAL

**PESTANA SINTRA GOLF**  
Quinta da Beloura, Rua Mato da Mina, 19  
2710-692 Sintra  
T.: +351 210 424 300  
F.: +351 210 424 398  
E.: [guest@pestana.com](mailto:guest@pestana.com)

GPS  
N: 38.76276327  
W: -9.3672877

[www.pestana.com](http://www.pestana.com)